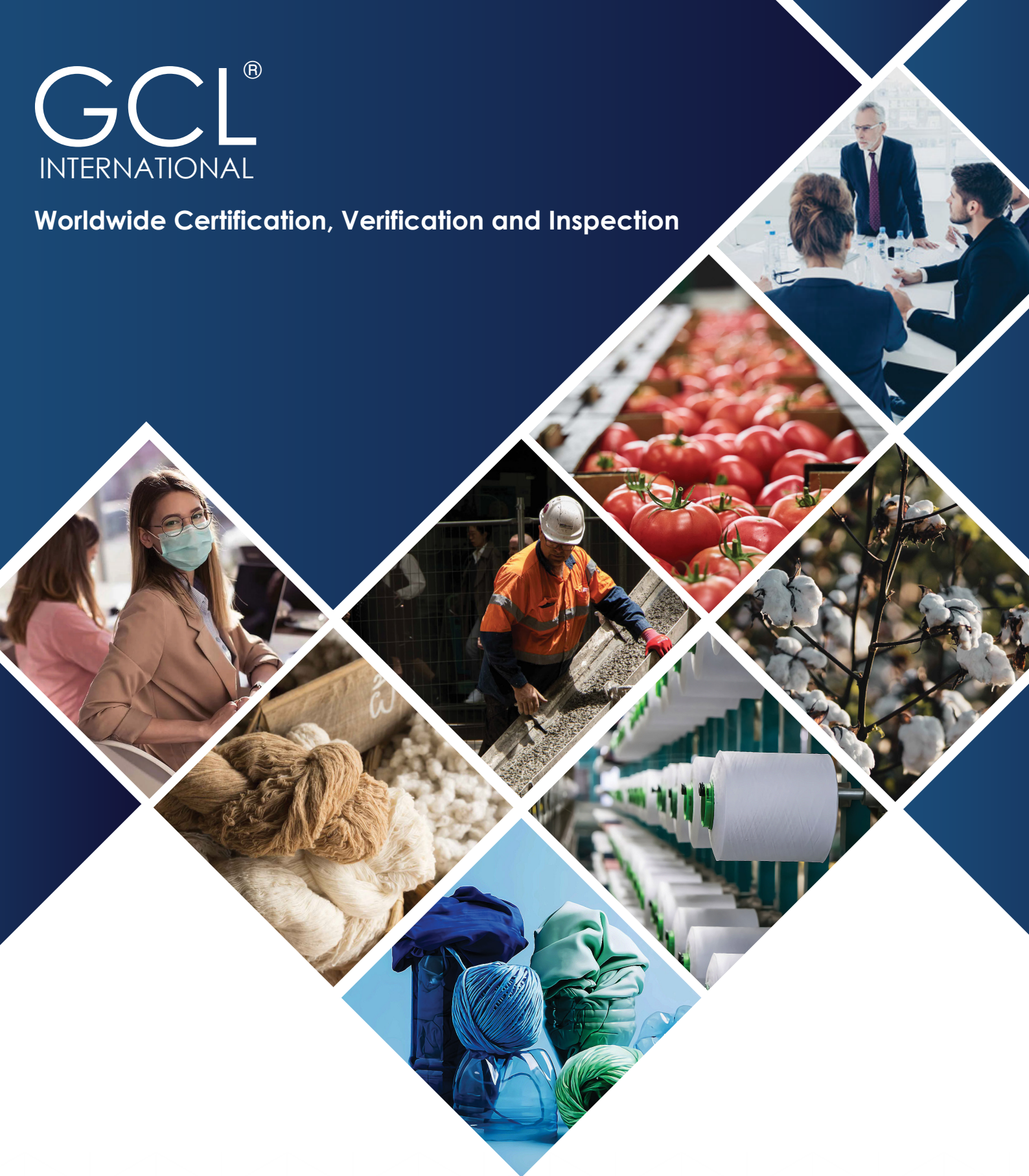


GCL[®]

INTERNATIONAL

Worldwide Certification, Verification and Inspection



**SERVING MORE THAN 50 COUNTRIES ACROSS
5 CONTINENTS SINCE 1995**

Accredited Certification Body for internationally recognised certification, verification and inspection

OUR RESOURCES

With over 600 personnel across the world, we are very equipped to conduct a wide range of audits and inspections.



Technical Expertise

Based at our UK head office, our technical team is focused on accreditation conformance and scheme expansion which allows our international offices to offer an extensive range of certification products.



Local Account Management

Our international offices are responsible for offering a local service to our clients in respect of communications, account management and auditing.



Technology

We are at the forefront when it comes to technology. Our bespoke systems allow us to operate efficiently and effectively across the world. This type of solution allows us to communicate and complete processes in a timely and cost-effective manner.

WHAT WE DO

Management system certification

We provide management system assessment and certification to a range of internationally recognised standards including: ISO 9001, ISO 14001, ISO 22000, ISO 27001, ISO 45001, FSSC 22000.

Product certification

We provide product certification including: Global Organic Textile Standard (GOTS) and Textile Exchange (CCS, OCS, RCS, GRS, RDS, RWS, RMS and RAS).

Inspection

We provide verification of lift installations to the UK Lifts Regulation 2016, Schedules 15, 18 and 19.

Verification

We provide verification services to a range of EU recognised standards including: Higg Index FEM and Social & Labor Convergence Program (SLCP).

Training

We provide a range of management systems, product systems and verification training on a worldwide basis.



WORLDWIDE ACCREDITATION



5965

Accredited Certification Body for Management system for a range of internationally recognised standards



5965

Accredited Inspection Body for inspection



Accredited Body of ANAB for TE & GOTS Programs



Ocean Bound Plastic (OBP)



The Canadian Food Inspection Agency - CFIA



Supplier Ethical Data Exchange (SEDEX)



Full Member Firm of Association of professional social compliance auditors



Approved Trainer & Verifier body for Social & Labor Coverage Program (SLCP)



Food Safety Management Systems



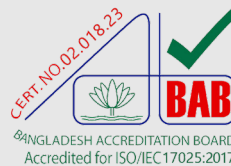
Worldwide Responsible Accredited Production



Approved Verifier Body for Higg FEM



Approved Trainer Body for Higg FEM



Bangladesh Accreditation Board Accredited for Calibration Lab



Bangladesh Accreditation Board Accredited for Environmental Inspection



Accredited product certification agency



Accredited for ZDHC (Zero Discharge of Hazardous Chemicals)



Member of Association of British Certification Bodies



Assurance Services International (ASI)



Approved Body in the United Kingdom



Member of Federation of Certification Bodies

MANAGEMENT SYSTEM CERTIFICATION

ISO 9001

QUALITY

ISO 9001 is an internationally recognised standard for the quality management systems. The standard is generic in nature and caters for both the manufacturing and service industries.

ISO 27001

INFORMATION SECURITY

ISO 27001 is a standard for the management of information security. It is applicable to all sectors of industry and not confined to just information held on computers. Information may be printed or written on paper, stored electronically.

ISO 22000

FOOD SAFETY

The ISO 22000 family of International Standards addresses food safety management. The consequences of unsafe food can be serious and ISO's food safety management standards help organizations identify and control food.



GOOD MANUFACTURING PRACTICE

GMP certification is granted to manufacturing or service systems of organisations to certify that they engage with good manufacturing practices in their manufacturing or service processes, according to a Standard Code of Practice related to their business.



C-TPAT SECURITY AUDIT

C-TPAT is a joint US government and trade deliberate program to build strong connections that strengthen the worldwide supply chain and border security by moving forward security in respects to transportation of merchandise, cargo, and people amid the course of the commercial shipping handle your business.

ISO 14001

ENVIRONMENTAL

It provides practical tools for companies and organizations looking to identify and control their environmental impact and constantly improve their environmental performance.

ISO 45001

OCCUPATIONAL HEALTH AND SAFETY

ISO 45001 is an internationally recognised standard for occupational health and safety. It exists to help all kinds of organisations put in place demonstrably sound occupational health and safety performance.

ISO 26000

BS ISO 26000 SOCIAL RESPONSIBILITY

ISO 26000 outlines international recommendations for making your organization more socially responsible. It will guide you in building and delivering a long-term social responsibility strategy, whatever the nature of your business.



FOOD SAFETY SYSTEM CERTIFICATION

The Foundation Food Safety System Certification 22000 (FSSC 22000) offers a complete certification Scheme for the auditing and certification of Food Safety Management Systems (FSMS).

SOCIAL COMPLIANCE (GCL-SCS:2009)

The GCL International Social Compliance Scheme (GCL-SCS:2009) is a supply-chain certification scheme. The Scheme ensures a degree of confidence in the supply chain that core social responsibility obligations are being considered and appropriate controls effectively implemented.

OTHER MANAGEMENT SYSTEM CERTIFICATIONS INCLUDE:

BS EN 14065

CODEX GMP

ISO 10002

ISO 3834

BS EN 16636

ISO 17100

ISO 15378

ISO/TS 29001

HACCP

ISO 22716

PRODUCT CERTIFICATION



OCS (ORGANIC CONTENT STANDARD)

The OCS applies to any non-food product containing 5-100 % organic material. It addresses the flow of product within and between companies, raw material verification, post-harvest processing, manufacturing, packaging and labelling, storage, handling, and shipping through the seller in the last business-to-business transaction.



GRS (GLOBAL RECYCLED STANDARD)

The GRS is an international, voluntary, full product standard that sets out requirements for third-party certification of recycled content, chain of custody, social and environmental practices and chemical restrictions. The goal of the GRS is to increase use of recycled materials in products and reduce/eliminate the harm caused by its production.



GOTS (GLOBAL ORGANIC TEXTILE STANDARD)

The Global Organic Textile Standard (GOTS) is the worldwide leading textile processing standard for organic fibres through covering social, chemical and environmental requirements in every stage of processing units. The aim of this standard is to ensure at least 70% of organic fibre, social, and environmental criteria to provide an assurance to the end of customer.



CANADA ORGANIC REGIME (COR)

Canada Organic Regime is to regulate all parties involved in the certification of organic products to verify all applicable regulatory requirements, standards and guidance documents are being met.

Ø ZDHC

ZERO DISCHARGE OF HAZARDOUS CHEMICALS (ZDHC)

The Roadmap to Zero Programme, by ZDHC, leads the fashion industry to eliminate harmful chemicals from its global supply chain by building the foundation for more sustainable manufacturing to protect workers, consumers and our planet's ecosystems.



RCS (RECYCLED CLAIM STANDARD)

The Recycled Claim Standard (RCS) is an international, voluntary standard that sets requirements for third-party certification of Recycled input and chain of custody. The Recycled Claim Standard is intended for use with any product that contains at least 5% Recycled Material. Each stage of production is required to be certified from beginning to end in final business to business transaction.



CONTENT CLAIM STANDARD (CCS)

The aim of the Content Claim Standard (CCS) is to ensure the accuracy of content claims. The CCS accomplishes this goal by verifying the presence and amount of a given raw material in a final product. It provides a strong chain of custody system from the source to the final product and can be certified by GCL International Ltd.



RESPONSIBLE DOWN STANDARD (RDS)

The Responsible Down Standard is an independent, voluntary global standard, which applies to all supply chain sites of waterfowl down and feather material from the hatchery to the seller in the last business-to-business transaction.

GCL International offers certification services for the supply chain scope of Responsible Down Standard (RDS).



RESPONSIBLE ANIMAL FIBER (RAF)

GCL offers certification services for the supply chain scope (post farm and post slaughter site) of the Responsible Mohair Standard (RMS), the Responsible Alpaca Standard (RAS) and the Responsible Wool Standard (RWS).

SOCIAL PROGRAMS



Sedex | Affiliate Audit Company

SMETA (SEDEX MEMBERS ETHICAL TRADE AUDIT) STANDARD – 2 / 4 PILLAR

"GCL International Ltd" is an approved AAC (Affiliate Audit Company) of Sedex. Being granted an account of AAC (Affiliate Audit Company) indicates GCL International's commitment to correctly use SMETA methodology and the Sedex Advance platform under Sedex's supervision.



WRAP – WORLDWIDE RESPONSIBLE ACCREDITED PRODUCTION

GCL International is now a WRAP accredited Monitoring Firm in Pakistan, Turkey, Thailand, India, UAE and Myanmar. GCL only engages WRAP Approved Auditors with APSCA Membership to conduct WRAP audits, as per WRAP requirements. GCL conducts all WRAP activities with the highest degree of honesty, transparency, and commitment to WRAP values and Principles.

FOREST PROGRAMS



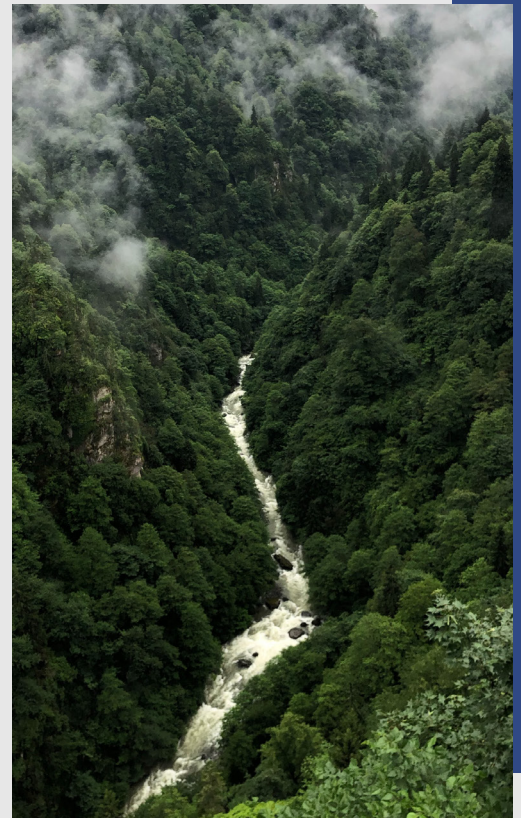
THE FOREST STEWARDSHIP COUNCIL® (FSC®)

The Forest Stewardship Council® (FSC®) is an international, non-governmental organisation dedicated to promoting responsible management of the world's forests. FSC's pioneering certification system enables businesses and consumers to choose wood, paper, and other forest products made with materials that support responsible forestry.



PROGRAMME FOR THE ENDORSEMENT OF FOREST CERTIFICATION

PEFC, the Programme for the Endorsement of Forest Certification – PEFC, is a leading global alliance of national forest certification systems. PEFC works to protect the forests by promoting sustainable forest management through certification.



ENVIRONMENTAL INSPECTION



AIR QUALITY (INDOOR & AMBIENT) ASSESSMENT

Air quality assessment is a process used to determine the existing quality of air, to evaluate the effectiveness of control programs implemented, and to identify areas in need of restoration.

NOISE LEVEL ASSESSMENT

Noise level assessment involves taking noise measurements throughout a facility, or sections thereof, to identify areas with potential noise hazards. This Assessment helps to reveal areas of harmful noise levels and the employees who may be exposed to this risk.

TEMPERATURE & HUMIDITY LEVEL ASSESSMENT

Temperature and humidity in the workplace are primarily issues of employee comfort. Poor temperature and humidity levels can have an adverse effect on employee health. Temperature and humidity can affect the air quality within a workspace as well.

LIGHT LEVEL ASSESSMENT

Light level assessment simply means examination of the lighting conditions in the work environment. This assessment helps to identify potential hazards and provides correcting measures needed to protect the employees. Insufficient lighting in workplace reduces employee's productivity.

STACK AIR EMISSION ASSESSMENT

Stack air emission assessment is a process to measure the emission of industrial pollutants emitted into the atmosphere. These can have a detrimental effect on local air quality. It helps to demonstrate compliance against limits outlined for permitted processes and to comply with the Environmental Permitting Regulations.

ODS GAS LEAK DETECTION TEST

Temperature and humidity in the workplace are primarily issues of employee comfort. Poor temperature and humidity levels can have an adverse effect on employee health. Temperature and humidity can affect the air quality within a workspace as well.

GREENHOUSE GAS (GHG) EMISSION ASSESSMENT

A Greenhouse Gas (GHG) emissions assessment provides the basis for further initiatives in reducing climate impacts, starting with public reporting, through target setting and implementing mitigation activities.

VOC ASSESSMENT

Volatile organic compounds (VOCs) are emitted as gases from certain solids or liquids. Among the major environmental problems, VOCs has considerable contribution.

CARBON FOOTPRINT

Greenhouse gas (GHG) emissions refer to the release of gases into the Earth's atmosphere that contribute to the greenhouse effect, trapping heat and leading to global warming. These gases include carbon dioxide (CO₂), methane (CH₄), nitrous oxide (N₂O), and fluorinated gases.

SCIENCE BASED TARGETS INITIATIVE (SBTi)

The Science Based Targets initiative (SBTi) is an international organization that empowers businesses to establish ambitious emissions reduction targets grounded in the latest climate science. SBTi aims to expedite global corporate efforts to halve emissions by 2030 and reach net-zero by 2050, supporting a sustainable global economy.

ENVIRONMENTAL ASSESSMENT

INITIAL ENVIRONMENTAL EXAMINATION (IEE)

Initial Environmental Examinations (IEE) is the primary stage in the Environmental Assessment of a project. It helps to identify and quantify associated environmental liabilities so that they can be managed, suggest efficient pollution control measures & makes project more environment friendly.

ENVIRONMENTAL IMPACT ASSESSMENT (EIA)

Environmental Impact Assessment (EIA) is a tool used to assess the significant effects of a project or development proposal on the environment. The EIA process can assist in the selection of alternatives, including the selection of the best practicable and most environmentally friendly option.

ENVIRONMENTAL MANAGEMENT PLAN (EMP)

Environmental Management Plan (EMP) is a guidance document to measure and achieve compliance with the environmental protection and mitigation requirements of a project, which are typically requirements for project permits/approvals.

ENVIRONMENTAL AND SOCIAL IMPACT ASSESSMENT (ESIA)

A process for predicting and assessing the potential environmental and social impacts of a proposed project, evaluating alternatives and designing appropriate mitigation, management and monitoring measures.

TESTING AND CALIBRATION

MECHANICAL INSTRUMENT CALIBRATION

Mechanical instrument calibration is necessary because those type of instruments are subject to drift due to regular usage, mechanical shock and exposure to varying atmospheric conditions, as such mechanical calibration is needed. During mechanical calibration factors like **Mass, Dimension, Volume, Pressure, and RPM** are calibrated in a temperature-controlled facility. We provide mechanical instrument calibration service by highly trained and experienced engineers.

TEMPERATURE CALIBRATION

Temperature calibration is a reliable, reproducible and documented comparison of one piece of equipment under test (data logger, sensor, thermometer) with another piece of equipment that has been temperature calibrated and referenced to a known set of parameters.

NOISE LEVEL METER CALIBRATION

Noise level meter calibration is very important to ensure that it gives the exact result data of measurement so that responsible authorities make sure that the noise cannot exide the limit to ensure the limit employees and the general public are not exposed to excessive levels of noise that could cause temporary or even permanent hearing damage. Our sound level meter calibrator can calibrate those meters by highly trained and experienced engineers.

LUX METER CALIBRATION

Lux meter calibration services are provided for a wide range of models, applications, and industries. In the process of calibration, lux meters are calibrated with the reference standard. It is also an important tool for OH&S compliance. Our trained engineers can calibrate light measurement device to ensure that it provides accurate output so that necessary steps can be taken and people work safely, precisely, and efficiently.



INSPECTION



LIFTS REGULATIONS 2016

The Lifts Regulations 2016 cover various aspects of lift safety and essentially perform the dual function of:

Perform the function of guaranteeing a high level of protection to lift users and maintenance workers all lifts to be sold and installed in the United Kingdom must meet the requirements of the Lifts Regulations. The requirements of the Regulations are addressed to lift installers and components manufacturers, but also have important implications for lift owners and users.



CUSTOMISED & SECOND PARTY AUDITS

GCL is your reliable partner for Customised & Second Party Audits. GCL can help to improve the performance and compliance in your supply chain with its specialist, technical experts, Inspectors and auditors. GCL has experienced resources in customised & Second Party Audits, serving more than 55 countries across 5 continents since 1994.



THE AIM OF THE SECOND PARTY AUDIT

- Strengthening an organization's supply chain.
- Minimize the risk and protect your company reputation.
- Increase efficiencies.
- Improve the quality within your company and in your supply chain.

THE SECTORS OF CUSTOMISED & SECOND PARTY AUDITS

- Recycled and Organic.
- Industrial Manufacturing.
- Consumer Goods & Retail.

VERIFICATION



Higg Index VERIFIER BODY
Higg Facility Environmental Module

HIGG FACILITY ENVIRONMENTAL MODULE (HIGG FEM)

The Higg Index is an apparel and footwear industry self-assessment standard for assessing environmental and social sustainability throughout the supply chain. It was developed by the Sustainable Apparel Coalition, a non-profit organization founded by a group of fashion companies.

The Higg facility environmental module (Higg FEM) is a sustainability assessment tool that standardizes how facilities measure and evaluate their environmental performance.

GCL International is an approved verifier body for HIGG FEM.

**Social & Labor
Convergence
Program**

SOCIAL & LABOR CONVERGENCE

SLCP – The Social and Labor Convergence Program aims to bring together unique perspectives to create an efficient, scalable and sustainable solution for social audits.

This program will help the industry to:

- Eliminate audit fatigue: avoid duplication and reduce the number of social & labor audits.
- Increase the opportunity for greater comparability of social & labor data.

GCL International is an approved verifier body for SLCP.

TRAINING

HIGG FACILITY ENVIRONMENTAL MODULE (HIGG FEM)

Developed by the Sustainable Apparel Coalition, the Higg Index is a suite of tools that enables brands, retailers, and facilities of all sizes at every stage in their sustainability journey. GCL International is an approved Trainer Body for Higg FEM.

SOCIAL & LABOR CONVERGENCE (SLCP)

The Social and Labor Convergence Program aims to bring together unique perspectives to create an efficient, scalable and sustainable solution for social audits. GCL is an approved trainer body for SLCP.

ZERO DISCHARGE OF HAZARDOUS CHEMICALS (ZDHC)

ZDHC aims to restrict the use of hazardous substances at the time of manufacturing textile, leather, and footwear value chain. GCL International is an accredited training provider for ZDHC.

RECYCLED AND ORGANIC STANDARD COURSE

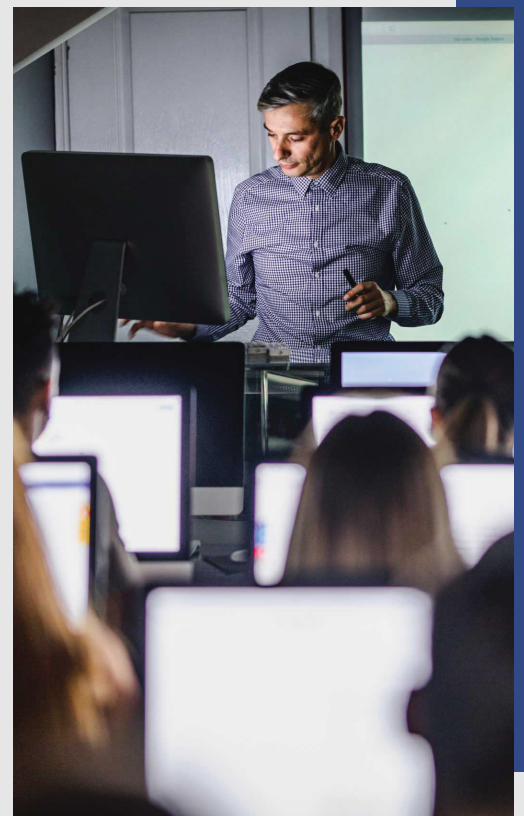
Sustainability in Recycled and Organic (GRS, RCS, OCS and GOTS).

AUDITOR TRAINING COURSES

Management System Auditor (Quality, Environmental and Health & Safety).

MANAGEMENT SYSTEM COURSES

ISO 45001 Awareness and Management System Implementation. ISO 27001 Awareness and Management System Implementation.



OPERATING WORLDWIDE

GCL International is a truly global service provider, with offices and personnel around the world. It is an Accredited Certification Body located in the central business district of London, United Kingdom.




HEADQUARTER

GCL International Ltd

 Level 1, Devonshire House,
One Mayfair Place, London,
W1J8AJ, United Kingdom.

 www.gcl-intl.com

 info@gcl-intl.com

 +44 (0)845 548 9001

BANGLADESH

GCL Assessment Services Ltd

 House no.: 1064 (1st, 2nd & 5th Floor);
Road no.: 07; Avenue: 08; Mirpur DOHS,
1216, Dhaka, Bangladesh.

www.gcl-intl.com.bd 

bangladesh@gcl-intl.com 

+880244801213 